

LAUNCH



J-Box 3

User Guide

Important Notes

J-Box 3 interfaces have been carefully designed and tested to comply with OBDII protocols. However, some vehicle models are not in full compliance with these protocols for various reasons. In addition, the computer control systems or sensors on any given vehicle may be malfunctioning or out of specification.

While **Launch's** testing and the experiences of thousands of **J-Box 3** users have shown the unit to be safe and reliable, there is an inherent risk in using any product that may potentially affect the operation or drive-ability of your vehicle.

If you are concerned about the operation of your vehicle at any time while using **J-Box 3**:

- * Pull off the roadway immediately or as soon as it is safe to do so.
- * Disconnect the **J-Box 3** from the OBDII port.
- * Consult a licensed mechanic or automobile service center.

Please report any issues or concerns to our Technical Support Department. We maintain an active database of the feedback we receive, and your comments can help us continuously improve the product.

Limited Warranty

Launch guarantees that every **J-Box 3** is free from physical defects in material and workmanship under normal use for one year from the date of purchase.

IN NO EVENT SHALL LAUNCH'S LIABILITY EXCEED THE PRICE PAID FOR THE PRODUCT. LAUNCH SHALL BE EXEMPT FROM ALL OTHER CLAIMS WHETHER BASED UPON DIRECT, INDIRECT, SPECIAL, INCIDENTAL, OR CONSEQUENTIAL DAMAGES RESULTING FROM THE USE OF THE PRODUCT, ITS ACCOMPANYING SOFTWARE, OR ITS DOCUMENTATION.

Launch makes no warranty or representation, expressed, implied, or statutory, with respect to its products or the contents or use of this documentation and all accompanying software, and specifically disclaims its quality, performance, merchantability, or fitness for any particular purpose. **Launch** reserves the right to revise or update its products, software, or documentation without obligation to notify any individual or entity.

Copyright & Trademarks

© 2018 Launch, All Rights Reserved.

LAUNCH

is a registered trademark of **Launch**, and is registered in the United States and other countries. All other marks are trademarks or registered trademarks of their respective holders.

Pictures are for illustration purposes only. Specifications are subject to change.

FCC Statement

The wireless module has been tested and found to comply with the FCC part 15 and ICRSS210 rules. These limits are designed to provide reasonable protection against harmful interference in approved installations. This equipment generates, uses, and can radiate radio frequency energy. If not installed and used in accordance with the instructions, this device may cause harmful interference to radio communications. However, there is no guarantee that interference may not occur in a particular installation. This device complies with part 15 of the FCC rules. Operation is subject to the following two conditions: **(1)** this device may not cause harmful interference, and **(2)** this device must accept any interference received, including interference that may cause undesired operation. Modifications or changes to this equipment not expressly approved by the party responsible for compliance may render void the user's authority to operate this equipment.

- * Modular Approval, FCC and IC
- * FCC ID: X3ZBTMOD3
- * IC: 8828A-MOD3

*In accordance with FCC part 15, the **SPT2632C1A.AT2** is listed above as a modular transmitter device.*

Contents

Important Notes.....2

Limited Warranty.....3

Copyright & Trademarks.....4

FCC Statement.....4

Introduction.....6

Getting to Know the J-Box 3.....6

Installation & Device Activation.....7

J2534 Toolbox 3®.....12

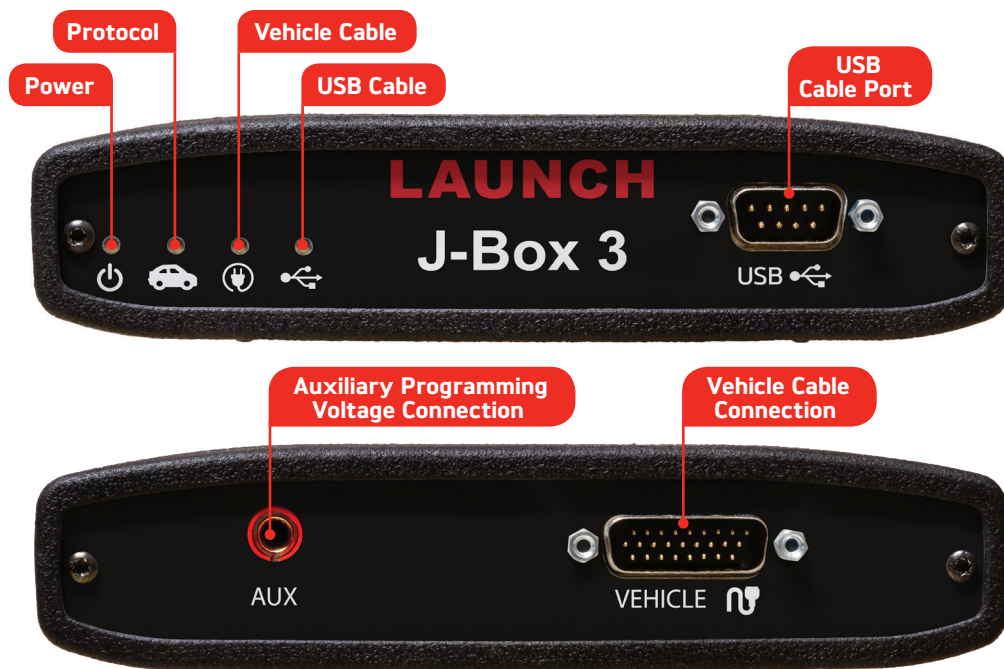
Product Specifications.....15

Technical Support.....16

Introduction

Thank you for choosing **J-Box 3**! The **J-Box 3** will allow you to re-flash modern vehicle controllers to stock as well as perform dealer level diagnostics on select manufacturer's vehicles. This Quick Start Guide covers the initial setup, features, and common questions. Information for individual manufacturers can be found in the **J2534 Toolbox 3** application.

Getting to Know the J-Box 3



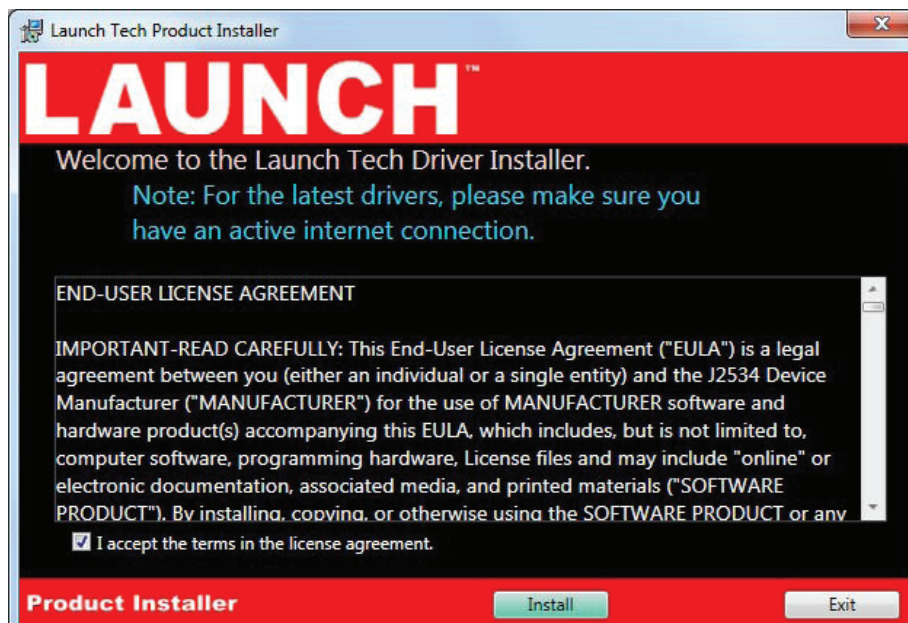
LED Status Lights

	RED		GREEN	
	BLINKING	SOLID	BLINKING	SOLID
POWER	Firmware error: Call Technical Support	-	Device startup in progress	Device is functioning
PROTOCOL CONNECTION	-	-	Connected and communicating with vehicle	Connected to vehicle
VEHICLE CABLE	-	Cable not connected or cable error	-	Cable OK / Vehicle power (Communication)
USB CABLE	-	Installation Issue: Call Technical Support	-	Connected to PC

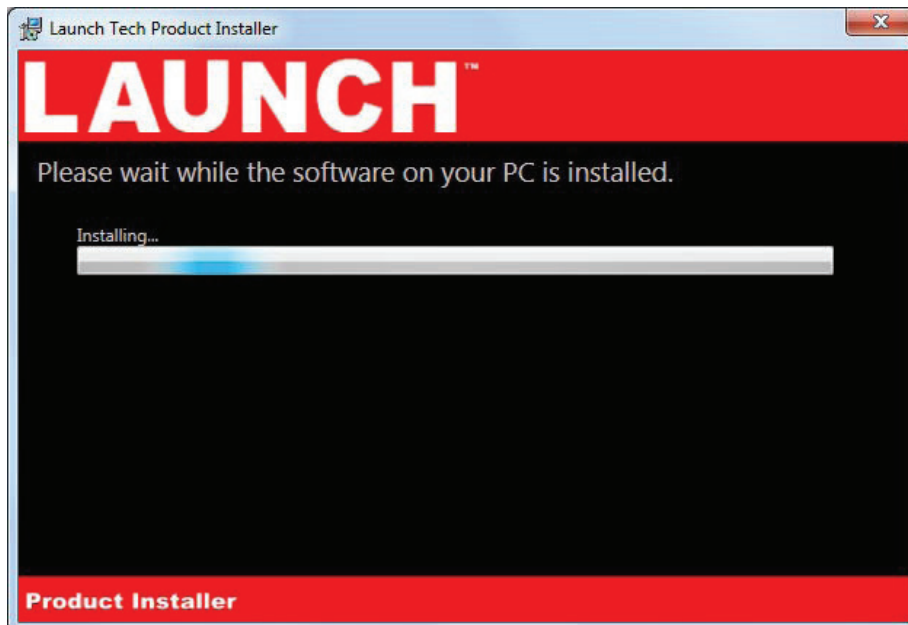
Installation & Device Activation

Windows 10 users:

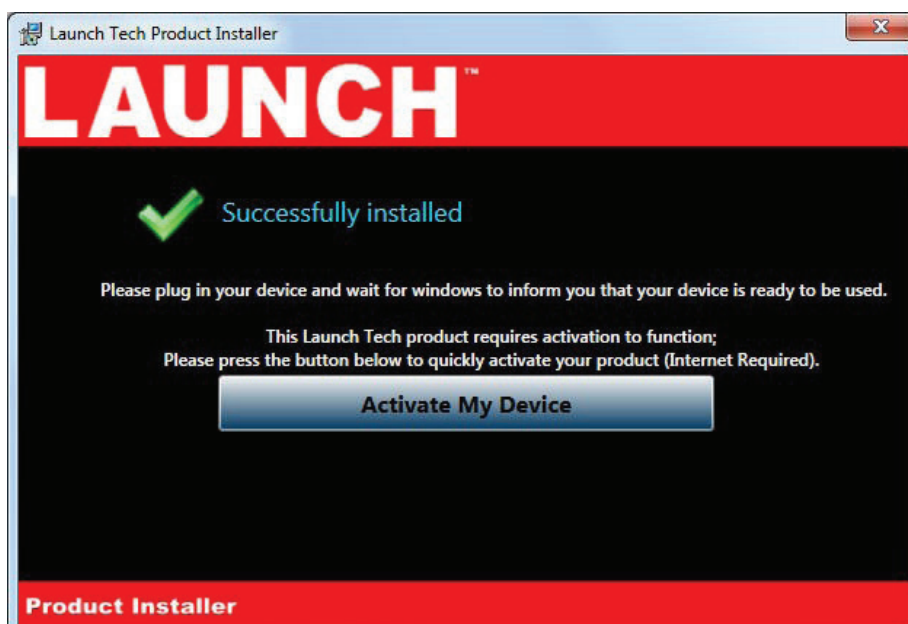
1. It is important that you connect the device to your PC first.
 - a. Initial low-level drivers will be automatically downloaded and installed as Windows Update recognizes your device.
 2. Leave your device connected to your PC and proceed to **Step 1** of the Installation & Device Activation process.
1. Insert the CD included with your **J-Box 3** into your PC. You will need to have an internet connection to get the latest drivers. If your PC does not have a Disk Drive, please go to the **Launch** website and click on **Downloads** to get the **J-Box 3** Installer.
 2. Run the Setup application, check the box next to **I accept the terms...** and click **Install**.



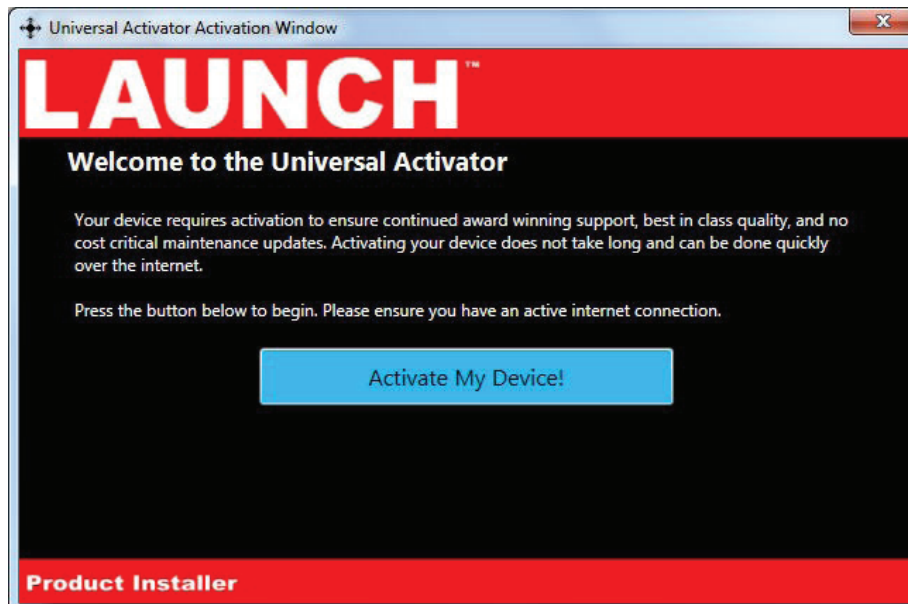
- The Setup application will install the **J-Box 3** Drivers, the J2534 Toolbox 3 on your PC.



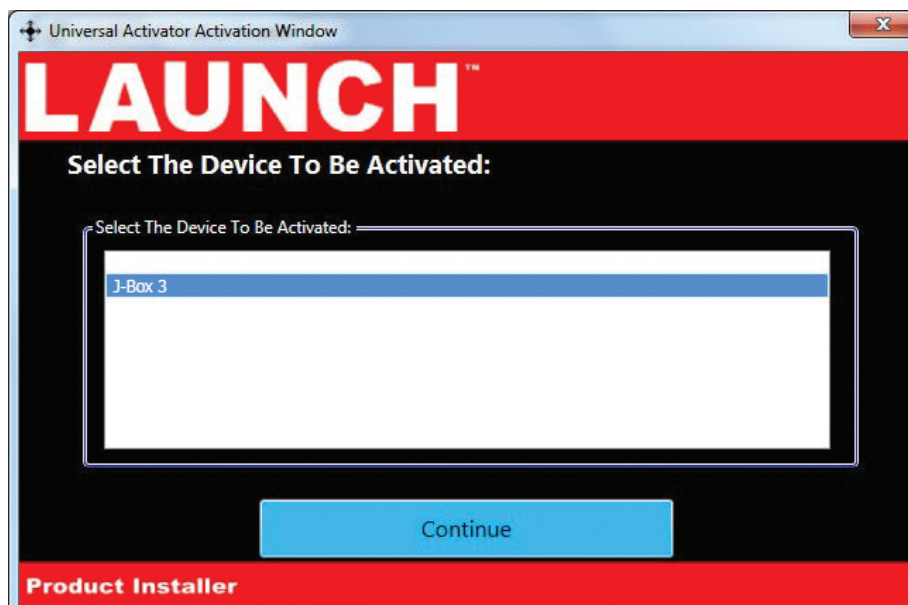
- Once the setup application has finished, Connect the USB cable to your **J-Box 3** and to the PC. Once you have gotten a message in the lower right hand corner that the device has been installed, click **Activate My device**. Then Click **Exit**.



- The activator application will open after clicking **Activate My Device** in the setup application. Click the **Activate My Device!** Button.



- Select the interface you want to activate and click **Continue**.



- Enter your information and click **Continue**.

Universal Activator Activation Window

LAUNCH™

To Activate Your Device, We Need To Know More About You...

We use this activation information to activate your product's warranty; Without it, your product is unprotected.

First Name: Last Name:

Country:

Company:

Address:

City:

State:

Phone:

Product Installer

- Select your type of business and level of programming experience, then select the OEMs you are planning to support.

Click **Continue** once you are done.

Universal Activator Activation Window

LAUNCH™

Tell us about your business...

Describe your BusiNESS:

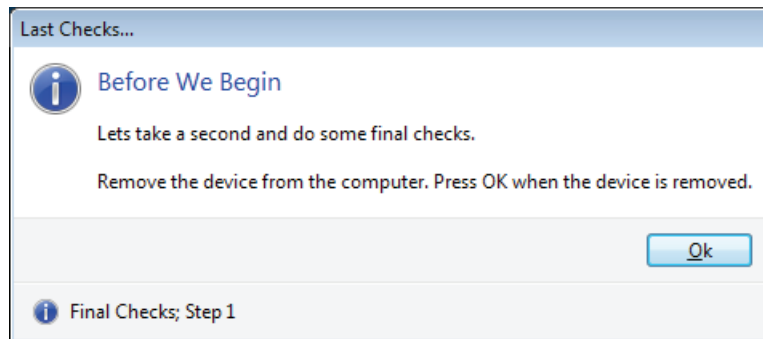
Reprogramming Experience:

Supported OEM's:

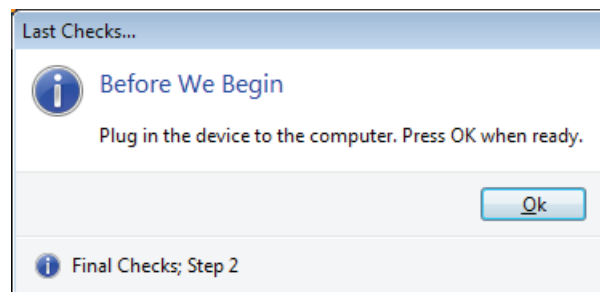
<input type="checkbox"/> Acura \ Honda	<input type="checkbox"/> Allison
<input type="checkbox"/> Audi \ VW	<input type="checkbox"/> Caterpillar
<input checked="" type="checkbox"/> BMW \ Mini	<input type="checkbox"/> Cummins
<input checked="" type="checkbox"/> Chrysler \ Fiat Group	<input type="checkbox"/> Dana
<input type="checkbox"/> Ford Group	<input type="checkbox"/> Detroit Diesel
<input checked="" type="checkbox"/> GM Group	<input type="checkbox"/> John Deere

Product Installer

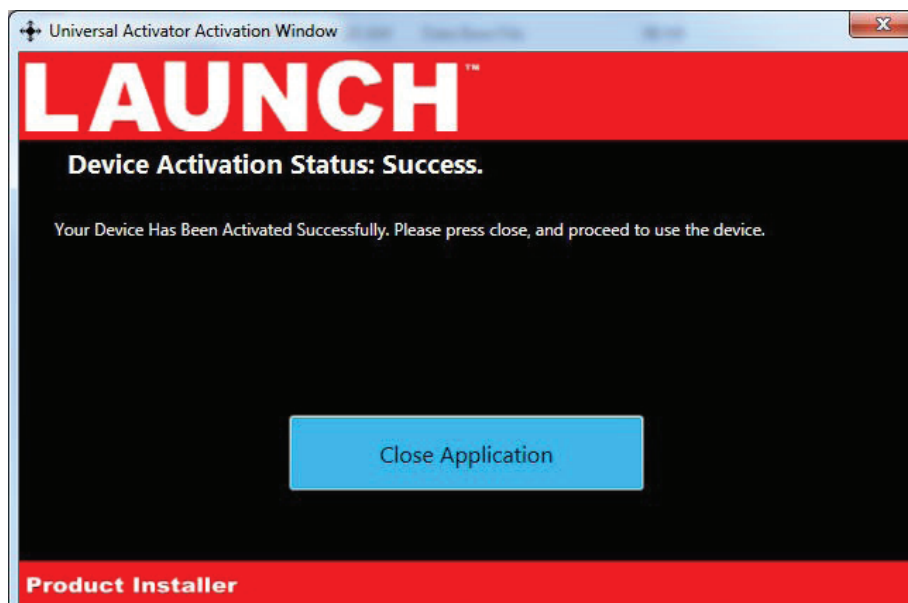
- Unplug your **J-Box 3** from your PC and click OK.



- Plug your **J-Box 3** back into your PC, and click OK.



- Your device has been successfully activated, click **Close Application**.

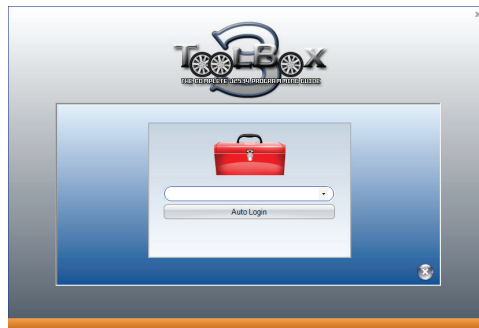


J2534 TOOLBOX 3®

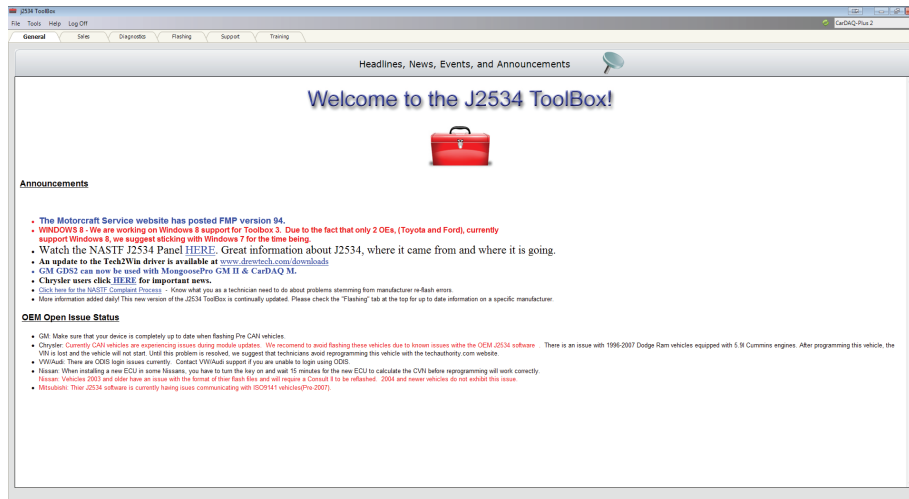
1. Double Click the **J2534 Toolbox 3** Icon on the Desktop.



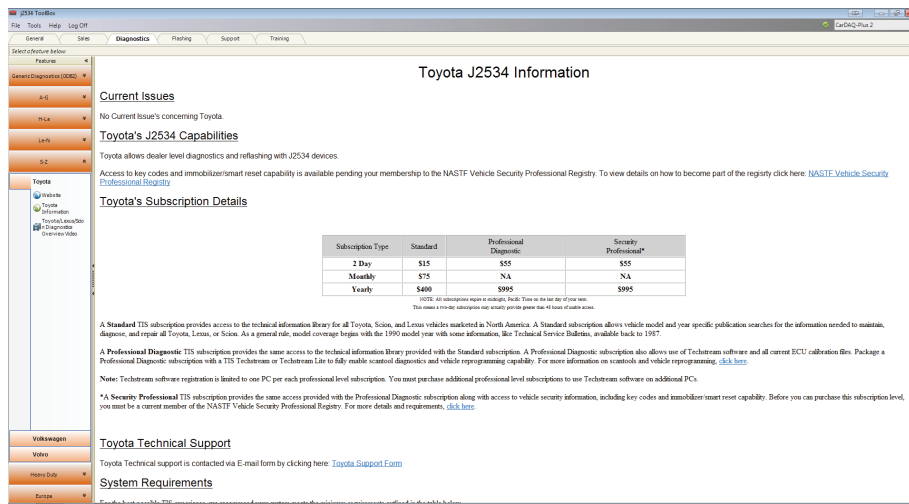
2. Select your interface from the drop down and click **Auto Login**.



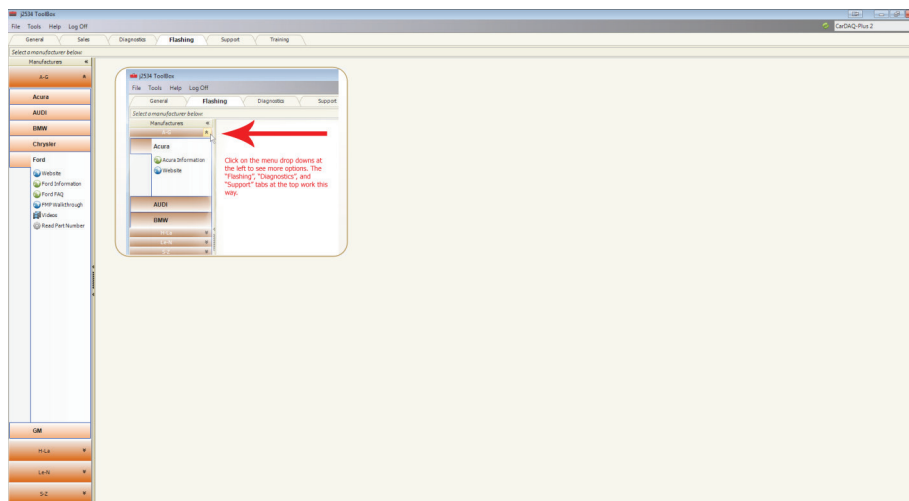
3. The **Toolbox** will open with 6 tabs available. The first is **General**, it has news, current OEM concerns, and training broadcast invitations.



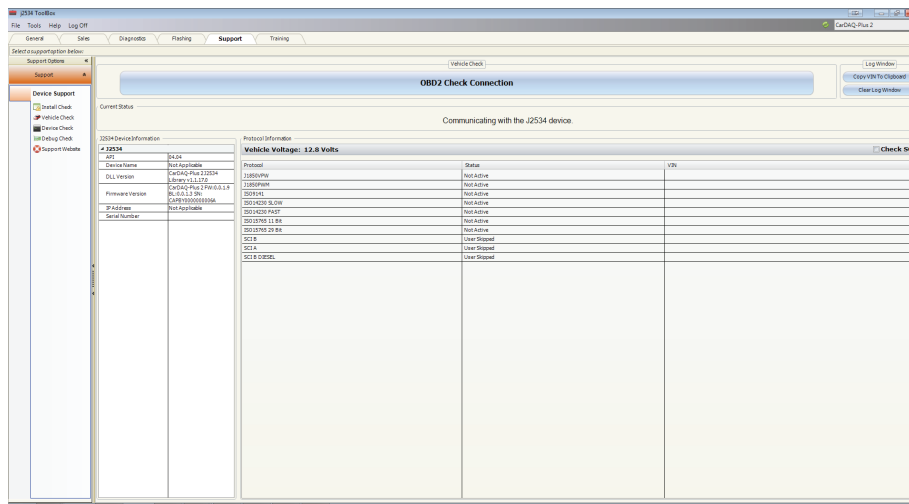
- The **Diagnostics** tab has basic Diagnostic functions, as well as links, information and videos about all OEMs that currently provide diagnostics via J2534.



- The **Flashing** tab contains the information pertaining to OEM J2534 re-flashing including links, information, walk-throughs, and some helper functions.



6. The **Support** tab has functions to check driver installation, vehicle communication, update your device, create debug logs, and contact Technical Support.



7. The **Training** tab includes videos of installing and using OEM J2534 applications with **Launch** products.

PRODUCT SPECIFICATIONS

Protocols Supported:

- * CAN Bus (CAN FD, ISO 15765, GMLAN, J1939, & ISO14229)
- * 4 CAN channels (FD CAN, DUAL WIRE)
- * Single-wire CAN support
- * Ford SCP (J1850PWM)
- * GM Class2 (J1850VPW)
- * KWP2000 (ISO9141/14230)
- * Chrysler SCI (J2610)
- * Compliant to SAE J2534 (FEB 2002) and SAE J2534-1 (DEC 2004)
- * Compliant to ISO 22900-1 MVI physical layer
- * Programming voltage on J1962 (PIN 6, 9, 11, 12, 13, 14, OR AUX)
- * Ground Pin 9

Operating Systems Supported:

- * Windows 7® (32-BIT/64-BIT)
- * Windows 8® (32-BIT/64-BIT)
- * Windows 8.1® (32-BIT/64-BIT)
- * Windows 10® (32-BIT/64-BIT)

Physical Specifications/Tolerances:

NAME	VALUE
Dimensions (approximate)	6.5" × 6" × 1.5"
Input Voltage Range	7VDC to 36VDC
Supply Current	220mA @ 7VDC 175mA @ 12VDC
Operating Temperature	0°C to 60°C (ambient)
Storage Temperature	-20°C to 85°C (ambient)
PC Communications Type	USB version 1.1 or higher

Technical Support

Please contact **Launch** for technical support.

If technical support finds it necessary for the unit to be returned for repair, you will be asked for your contact information and then provided with a Return Authorization number (RA#). **Launch** will use the RA to track the unit through the repair process. Please write this number on the outside of your shipping box so it can be routed to the correct department. If the necessary repair is not covered by **Launch's** warranty, you will be contacted for payment arrangements.

J-Box 3



LAUNCH

Pernavas 43A, Riga,
Latvia, LV-1009
+37129416069

www.diagtools.eu

© 2018 Launch. All Rights Reserved.